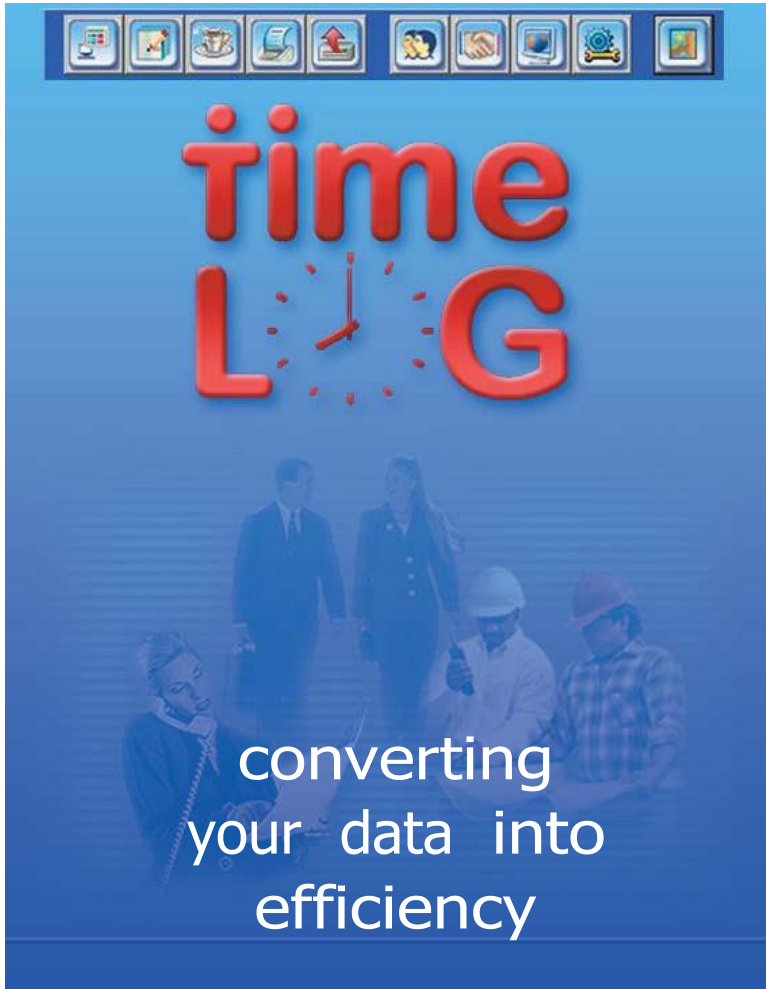


Personnel Activities Management System



time
LOG

converting
your data into
efficiency



TimeLOG is a comprehensive data collection software that streamlines work flow in your organization by handling ALL employees' activities, such as: Time & attendance, access control, task management and absence balance.

You can use any card technology for the employee - magnetic, proximity or smart card. For additional security you can use the cards with biometric verification or identification methods, such as fingerprint or Facial recognition.

TimeLOG is designed for use in small to medium organizations, merging the latest developments in IT with great flexibility.

You will cover the cost of the system in no time at all

What can TimeLOG do for your company?

Benefits

Improves control by eliminating:

- Inaccurate clocking
- Unauthorized overtime payments
- Unnecessary legal disputes with employees
- Unfair or biased payments

Improves payroll accuracy by eliminating:

- Calculation errors
- Rounding mis-adjustments
- Accidental overpayments
- Cash disbursements to correct payroll errors

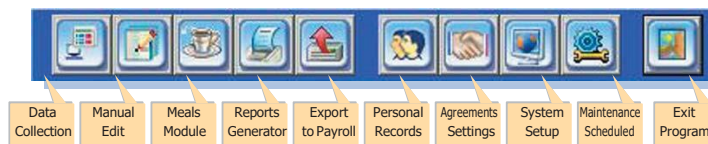
Improves payroll processing:

- Automated timecard totaling
- Attendance data processed electronically
- Automated reporting
- Direct electronic transfer of time data to payroll

Additional Benefits

- Eliminates time wasted collecting and processing paper timecards
- Management reports show where your labour costs originate

System typically pays for itself in under six months - Fast ROI



Features

- Fingerprint: Enrolling a fingerprint template (either at the PC or the time recording terminal), which will later be verified when employees swipe their cards. This feature will increase the level of security for access control
- Option to define more than one card per employee for a defined period of time
- Option to assign several work rule

agreements to one employee per time period

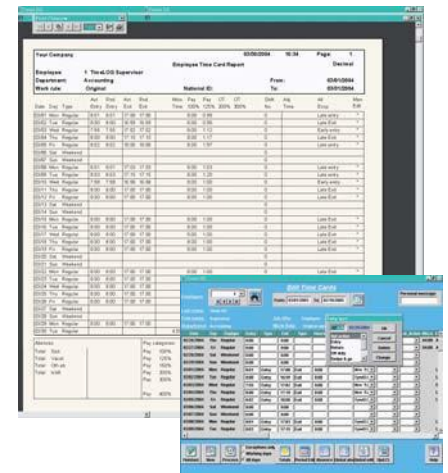
- Clock key tab Function field includes: Partial Absence - allowing the employee to book absences of several hours per day, and Periodic Absence - allowing employees to book a date range for absence
- Generate management and control reports
- Obtain for each employee a performance analysis report on annual attendance, absences, lateness, over time, etc.
- Import file utilities for both employees and project details
- Multi-level project costing module for information on costs, according to man-hours and direct costs
- A multi-lingual system

Export



Easy interfacing with most payroll programs

Edit



Enables data adjustments for employee or group of employees for selected dates

Employee



An extended employee file, for keeping and updating all employees' personal details. A Word document can be attached to each file.

Statistics



Powerful reports presenting periodical time & attendance related statistics, such as: overtime, late arrivals, sick leave, etc.

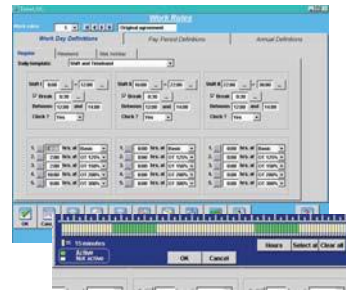
Modules

Time & Attendance

The solution for advancing companies to automated and accurate time tracking of employees' hours. Designed for streamlining payroll processes.

Work Rules

A set of agreements specifying various organization work rules



Absence Balance

All paid absences will be monitored. The system will raise an alarm if an employee tries to book an absence exceeding his entitlement. Balances monitored include vacation, sick leave, etc.

Access Definitions

Defining access permissions per employee per door per time zone

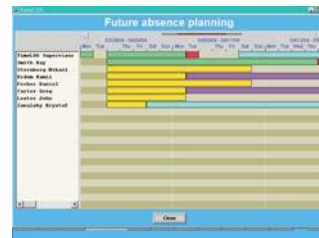


Meals Module

Easily manage all meals provided to the employees - manage available meal types, contractors that provide the meals, rate meals preferences, forecast of preferred meals, terminals from which data is received, calculation of meals cost, and more.

Future Absences

The generated reports enable both maintenance of accurate absence records, and future planning



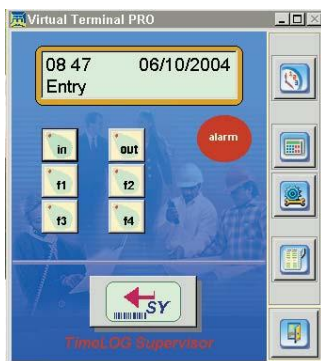
Meals Module

Calculate meals cost for the company / employee / guest / per contractor



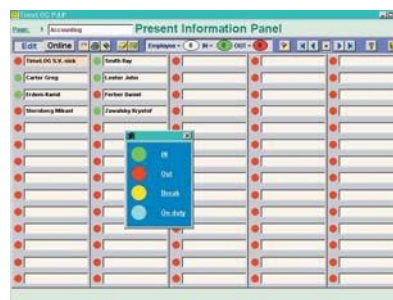
Complementary Capabilities (additional modules)

Virtual Terminal



Enable employees to report their attendance from their PC workstation instead of at the time recording terminal

P.I.P – Presence Info Panel



Displays an online graphic report of which employees are present / absent



TimeLOG offers



- Built-in template employee agreements: use-as-is, customize or define your own
- Global absences: enables multiple employee periodic absence definitions
- Weekly, bi-weekly, semi-monthly, monthly and flexi pay periods
- Accommodates fixed and flexi-time schedules
- Comprehensive PDF format on-line help
- Monitoring and planning absence forecast screen
- Access control for small to medium-size enterprises
- Display online Totals and employee Balance (only on TCP/IP by using the SY-Server}

Comparison Table for TimeLOG Mini, Standard and PRO

	 TimeLOG Mini	 TimeLOG Standard	 TimeLOG PRO
No. of Employees	30	250	1000
Work Rules	unlimited templates		unlimited templates
Work Rules - Time Band and Core Time	Yes		Yes
Employee File	full details		full details
Payroll	Yes		Yes
Dictionary - Time Classification	50		50
Dictionary - Pay Category	30		30
Dictionary - Day Type	unlimited		unlimited
Reports - Customize	unlimited		unlimited
Reports - Generator	Yes		Yes
Reports	basic reports		variable reports
Terminal Type	unlimited terminals, TCP/IP, modems and		unlimited terminals, TCP/IP, modems and
Multi User	No		Yes - up to 5
Balance Tracking	Yes		Yes
Import Employee and Project Details	Yes		Yes
Direct Connection to Word, Email, Excel	Yes		Yes
Statistical Report	Yes		Yes
Shift Rotation	Yes		Yes
Biometric fingerprint	Yes		Yes
Multi Level In Project Module	Yes		Yes
Report Absences On the Clock	Yes		Yes
Present Information Panel (Optional)	Yes		Yes
Future Absences Screen	Yes		Yes
Manual Edit - Employee's Global	Yes		Yes
Employee File - Periodic Additional Work	Yes		Yes
Employee File - Periodic Additional Badge	Yes		Yes
Blocks Duplicate Swipe in Defined Time	Yes		Yes
Display Last Transaction on the Clock	Yes		Yes
Terminals Supported	SY-777/A, SY-765, SY-785, SY-715		SY-400/A, SY-777/A, SY-745, SY-765, SY-785, SY-715

Options: P.I.P, E-TimeLOG, Virtual terminal

P.I.P

E-TimeLOG, Virtual terminal, P.I.P

Terminal Options

SY-745



SY-765



SY-785



SY-715



SY-777/A



SY-400/A

